

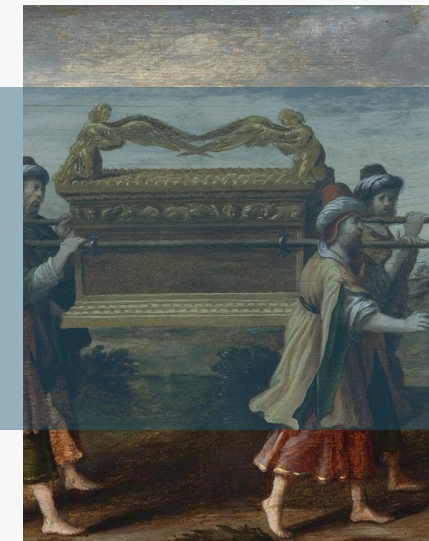


# Archaeology & The Bible

MELC 0100, ANTH 0111, JWST 0111

Fall 2025, TR 1:45–3:15pm

University of Pennsylvania



## Course Description:

In this introductory course, students will learn how archaeology illuminates the material and social world behind the texts of the Hebrew Bible and contributes to debates about the history and culture of these societies. We will study the sites, artifacts, and art of the lands of Israel, Judah, Phoenicia, Philistia, Ammon, Moab, and Edom during the period framing the rise and fall of these kingdoms, ca. 1200 to 330 BCE.

We will see how biblical archaeology arose in the nineteenth and early twentieth centuries, how the complex relationship between archaeology and the biblical text has evolved to the present day, and how new discoveries continue to challenge preconceptions about this period. We will learn a broad range of methods in both current archaeology and biblical studies and how they can be used to answer questions about ancient societies, their practices and beliefs, and the material and textual remains they left behind.

## Instructors:

### Timothy Hogue

Assistant Professor of Hebrew Bible and Ancient Israelite History & Culture, Dept. of Middle Eastern Languages and Cultures

Dr. Tim Hogue is an expert in ancient Middle Eastern languages, literatures, and inscribed artifacts. His work situates the Bible within its broader historical and social contexts.

### Vanessa Workman

Center for the Analysis of Archaeological Materials, Penn Museum, Lecturer, Dept. of Middle Eastern Languages and Cultures

Vanessa Workman is an archaeologist whose research integrates methods from earth and natural sciences to uncover new evidence about the lives of peoples in the ancient past. She has worked on projects at many archaeological sites associated with cultures in the Biblical texts.

