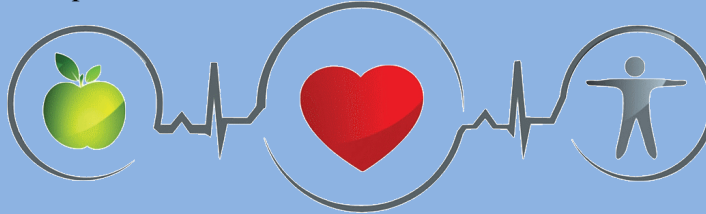


## TENTATIVE SYLLABUS FOR SPRING 2024

**SPANISH 105-680 – Elementary I, Spanish for the Medical Professions**    **Instructor: Monserrat Bores-Martínez**  
UNIVERSITY OF PENNSYLVANIA  
DEPT. OF SPANISH AND PORTUGUESE  
Spring 2024: M, W 5:15-7:14 pm  
Office Hours: TBA  
E-mail: [mbores@sas.upenn.edu](mailto:mbores@sas.upenn.edu)



### Course Description

Spanish 0105 is a first-semester elementary Medical Spanish Language course and the first in the Spanish for the Medical Professions sequence. It is designed for students with no prior coursework in Spanish. This course teaches beginning students the fundamentals of practical Spanish with an emphasis on medical situations and basic medical terminology. In this course, particular attention will be given to developing speaking and listening skills, as well as cultural awareness. It incorporates activities, vocabulary, and readings of particular interest to healthcare practitioners, while adhering to the goals and scope of Spanish 0100, the first-semester regular Spanish language course.

### Prerequisites and placement

To enroll in Spanish 0105, you must have fulfilled one of these prerequisites:

- You have never studied Spanish before.
- You scored below 380 on the SAT II.
- Students who have previously studied Spanish and have an SAT II, AP or IBHL score **DO NOT** need to take the online placement examination.
- Students who have previously studied Spanish and do not have an SAT, AP or IBHL score **MUST** take the online placement examination. You scored below 285 on the online placement examination, which places you into Spanish 105.

### Warning!

- Students who have already taken Spanish 0100 will not receive credit for Spanish 0105. Although these courses have different numbers, they are at the same level.
- Students who have already fulfilled the language requirement (based on their score on the SAT II, AP, or IBHL examination) or have taken courses at the 1000 and 3000 level, may not take basic-level language courses in the same language. They will not receive credit for this course, SPAN 0105.

Students in the College with a placement score are allowed to move up one level without seeking special permission; students in other schools who wish to move up a level must speak with the Medical Spanish courses coordinator, Prof. Jean Knight ([jknight@sas.upenn.edu](mailto:jknight@sas.upenn.edu)).

Scores based on exams using a multiple-choice format provide us with a preliminary placement level, but they do not test oral and listening skills. If necessary, students will be moved up a level if their ability to function in the language does not seem appropriate for the level of the course. You should consult your instructor or the course coordinator if you have concerns about your

placement. All students must confirm their placement by filling out the departmental credit regulation form at the following URL:

[https://upenn.col.quatrics.com/jfe/form/SV\\_9FveJK3axRqfmeN](https://upenn.col.quatrics.com/jfe/form/SV_9FveJK3axRqfmeN)

### Registration

Registration for language classes will remain open until January 31, 2024. After this date, students will no longer be able to enroll in Spanish 0105. The last day to drop a class is February 27, 2024.

### Code of Academic Integrity

The Department of Romance Languages fully supports and adheres to all university policies and procedures regarding academic integrity (cheating, fabrication, plagiarism, etc.). The work you submit in this class is expected to be your own. If you submit work that has been copied without attribution from any published or unpublished source including the Internet, or that has been prepared by someone other than you, or that in any way attributes somebody else's work as your own (e.g., translation without proper attribution), you may face discipline by the university's Center for Community Standards and Accountability.

For more information consult:

- University Code of Academic Integrity <http://www.upenn.edu/academicintegrity/>
- The Center for Community Standards and Accountability <https://csa.upenn.edu>
- Dept. of Romance Languages Guide to Academic Integrity (posted on the Canvas site for this course).

### Required books

- Rush, Patricia & Patricia Houston, *Spanish for Health Care*. 2nd Edition. Pearson, 2011 (textbook and student workbook), print or eText. Students are **not** required to obtain an online access code for the course materials.

These books are available in print through the Penn Book Store, 3601 Walnut St., click [here](#). The books are also available in an eText (digital) format through the publisher, click [here](#).

### Recommended book

Students who feel that they need additional grammar instruction are encouraged to obtain *English Grammar for Students of Spanish*, by Emily Spinelli. This book provides an overview of the grammar points covered in Spanish 205 and offers tips to students who have had little exposure to the study of a foreign language.

### Grading Distribution

The final grade will be determined in accordance with the following distribution:

Preparation/Participation	15%
Chapter Exams (3)	30%
Quizzes (5)	25%
Compositions (2)	10%
Homework	10%
Oral Exam (1)	10%

## Grading Scale

A+	99-100	B+	88-89	C+	79-80	D+	72-73
A	94-98	B	83-87	C	76-78	D	70-71
A-	90-93	B-	81-82	C-	74-75	F	Below 70

## Attendance

It is the departmental philosophy that students in each section form a learning community so that they benefit from each other's views, positions, knowledge, and experiences. By not being there students miss the opportunity to learn from their peers and from their instructor, as well as to share their insights with them and contribute to the class as a whole. The communicative and social aspect of language is central and starts in the classroom. Therefore, given the emphasis placed on participation and interaction in this class, students are required to attend all classes.

Students who miss 2 classes (a week's worth) or less will not see a reduction in their final participation grade. Upon the second absence, their instructor will send them a Course Action Notice. If they reach 3 absences, their final participation grade for the course will be lowered by 1.8% (out of 15%). For each subsequent absence, their final participation grade will be lowered an additional 1.8%. Students are expected to come to class on time; repeated tardiness will be counted towards an absence (4 late arrivals equal 1 absence).

Please note that there are no "excused absences." Illness, personal emergencies, travel, participation in sports events or other university-sponsored events all count as absences. If students miss class, they are responsible for making up any work and for knowing the material covered.

All absences must be reported through the Course Absence Report system, which students can access through Path@Penn. The system should not be used for days on which exams are scheduled. If the absence is for more than a week's worth of classes, they should contact their home school's advising office for assistance and to discuss the academic implications of a longer absence.

For further information regarding attendance, consult the official College webpage on Policies Governing Class Attendance (<https://www.college.upenn.edu/attendance>). Should you have any questions or concerns, you should consult your instructor, the course coordinator, the Director of the Spanish language program or the Undergraduate Chair of Hispanic Studies.

## Class Preparation

Homework is an essential part of preparing for class, and thus is counted in your participation grade. You will be assigned work from the student workbook (**WB**). The answers are in the back of the workbook. After answering the questions on your own, check your answers with the answer key provided and correct them with a pen of different color. Always bring your textbook and workbook to class. Not all workbook exercises will be assigned as homework; some may be done as classroom practice.

In addition to the textbook website, we also have a class website in Canvas. Be sure to check there regularly, as all homework assignments will always be listed there. There may be occasional changes to the schedule that is listed on the syllabus, but Canvas will always have the most up-to-date information.

Remember that learning does not happen only during class time. When you study vocabulary and grammar, complete workbook exercises, write a composition, or consult the dictionary, you should be learning. If you are not, you are not using your time wisely. Pay attention to your mistakes. You need to become aware of them, because only you can correct them.

You will get 2 participation grades during the semester. Your participation grade will be based on your ability and willingness to demonstrate that you have studied and learned the vocabulary and grammar assigned and that you have read and reflected upon the readings. Equally important is your active engagement in class activities and discussions. Active participation in class activities is perhaps one of the easiest ways to positively influence your grade.

### **Class Presentation**

In pairs, students will make a presentation at the end of the semester. You will be expected to deliver a concise overview of the situation of “your patient” using the grammar and vocabulary studied during the semester. You will have 8 minutes for questions and answers following the presentation.

### **Written exams and Quizzes**

There will be five (5) quizzes and three (3) exams during the semester. There will be one quiz per chapter (except the last chapter), based on specific vocabulary, grammatical or cultural points we have discussed. The exams will be more comprehensive, covering two (2) chapters each. There will be no final exam during finals week. **There will be no make-up quizzes or exams.** If you miss one you will receive a 0 for that exam or quiz.

### **Oral Exam**

The oral exam will be held during the last week of classes and will be conducted in pairs in the instructor’s office.

**PLEASE NOTE,** Cell phones, iPods and PDAs are not conducive to a learning environment in the foreign language classroom. The use of these devices will not be permitted.

### **Learning Resources**

There are several support services on campus for students who may need assistance with language learning or learning and time management in general. These include:

- **Language Direct.** “A unique peer tutoring program for foreign language learners at Penn. Language Direct consists of a network of peer tutors, supervised by graduate students, who assist foreign language learners through drop-in tutoring and online help. Tutoring is available on campus and online.” <https://plc.sas.upenn.edu/languagedirect>
- **The Weingarten Learning Resources Center** provides free professional guidance in academic skills such as academic reading, writing and study strategies. <https://wlrc.vpul.upenn.edu>
- **The David B. Weigle Information Commons** (first floor west of the Van Pelt Dietrich Library Center) supports collaborative learning and group activities using the latest technologies, provides students with group study rooms, seminar rooms, and training and equipment in the Vitale Digital Media Lab for digital media projects - including video, audio, imaging, and web publishing. <https://www.library.upenn.edu/wic>

- **The Romance Languages Department** provides a list of tutors who will tutor for a fee.  
<https://spanish.sas.upenn.edu/contact>
- **The Casa Hispánica**, part of the Modern Languages Residential Program of Gregory House, is located in the Class of 1925 building, 3940 Locust Walk. It sponsors a program of Spanish films as well as a weekly coffee hour in Spanish, which are open to the whole campus. It is also possible to join the residents for dinner any weeknight in 1925 Commons. For further details on these and other activities, visit their home page.  
<http://gregory.house.upenn.edu/frontpage>.

**Director of the Spanish Language Program**

María Victoria García-Serrano  
vgs@sas.upenn.edu

**Assistant of the Director**

Reyes Caballo-Márquez  
reyca@sas.upenn.edu

**Coordinator of the Medical Spanish Courses**

Jean Knight  
[jknight@sas.upenn.edu](mailto:jknight@sas.upenn.edu)

## CALENDARIO DEL CURSO (28 clases de 120 min/clase)

**\*\* PLEASE NOTE:** This is a tentative schedule that is subject to change according to our progress through the syllabus.

día	fecha	actividades en clase	tarea
lunes	22 enero	Bienvenida y presentación del curso/syllabus Para Comenzar (pp. 1-9) - Los saludos y las despedidas - El abecedario/El alfabeto	Estudiar vocabulario de "Para Comenzar" para próxima clase (p. 12) Hacer ejercicios del cuaderno para la próxima semana, pp. 1-2, ejercicios PC 1 - PC4
miércoles	24 enero	<b>REPASO DE SALUDOS Y DESPEDIDAS</b> - Los números - El calendario Para Comenzar (pp. 9-12)	
lunes	29 enero	- Los pronombres personales - Expresiones de cortesía	Estudiar vocabulario para hoy de "Para comenzar" (p. 12) Hacer ejercicios del cuaderno para la próxima semana, pp. 3-6, ejercicios pc7-pc13
miércoles	31 enero	Lección 1, Módulo 1 (pp.14-18) - Información personal - La hora Lección 1, Módulo 2 (pp. 19-24) - Historia del paciente - El verbo Ser + adjetivos	Estudiar vocabulario para hoy (pp. 33-34) Hacer ejercicios del cuaderno para la próxima semana, pp.8-13, ejercicios 1-2 - 1-13
lunes	5 feb.	Lección 1, Módulo 3 (pp. 24-28) - En el consultorio - Los artículos Lección 1, Módulo 4 (pp. 29-33) - ¿Qué le pasa? - Las preguntas	Estudiar vocabulario para hoy (pp. 33-34) Hacer ejercicios del cuaderno para la próxima semana, pp. 14-20, ejercicios 1-14 - 1-24 <b>LECTURA Y ACTIVIDADES</b>
miércoles	7 feb.	<b>PRUEBA 1 (VOCABULARIO- Lección 1)</b> <b>REPASO LECCIÓN 1</b> Lección 2, Módulo 1 (pp. 37-41) - Las partes del cuerpo - Los artículos + Los adjetivos	Estudiar vocabulario para hoy (pp. 54-56) Hacer ejercicios del cuaderno para la próxima semana, pp. 22-25, ejercicios 2-1 - 2-8 <b>LECTURA</b>
lunes	12 feb.	Lección 2, Módulo 2 (pp. 42- 46) - La cabeza - Los verbos que terminan en <b>-ar</b> Lección 2, Módulo 3 (pp. 46-49) - Los órganos - Los verbos que terminan en <b>-er, -ir</b>	Estudiar vocabulario para hoy (pp. 54-56) Hacer ejercicios del cuaderno para la próxima semana, pp. 26-30, Ejercicios 2-9 - 2-18

miércoles	14 feb.	REPASO VERBOS AR – ER - IR Lección 2, Módulo 4 (pp. 63-67) - Los sistemas - Expresiones con tener y estar - Lección 2, Síntesis (pp. 71-73)	Estudiar vocabulario para hoy (pp. 54-56) Hacer ejercicios del cuaderno para la próxima semana, pp. 30- 33, Ejercicios 2-19 - 2-25
lunes	19 feb.	PRUEBA 2 (GRAMÁTICA - Conjugación de los verbos ar – er – ir) REPASO para el Examen 1 Actividades comunicativas LECTURA Y ACTIVIDADES	
miércoles	21 feb.	EXAMEN 1 - LECCIONES 1 Y 2 Introducción: Lección 3 Actividades comunicativas	
lunes	26 feb.	Lección 3, Módulo 1 (pp. 59-63) - Estoy resfriado - El presente progresivo	Estudiar vocabulario para hoy (pp. 75-76) Hacer ejercicios del cuaderno para la próxima semana, pp. 34-36, Ejercicios 3-1 - 3-6
miércoles	28 feb.	Lección 3, Módulo 2 (pp.63-67) - Los primeros auxilios - Los verbos <b>ser</b> y <b>estar</b> <b>Introducción a la película MAR ADENTRO</b>	Estudiar vocabulario para hoy (pp. 75-76) Hacer ejercicios de cuaderno para la próxima semana, pp. 36-40, ejercicios 3-7 - 3-11
lunes	11 mar.	<b>Discusión de la película: MAR ADENTRO</b> (Alejandro Amenábar, 2004) Lección 3, Módulo 3 (pp. 68-71) - La enfermera de la escuela - El verbo <b>ir</b> y el futuro inmediato	Estudiar vocabulario para hoy (pp. 75-76) Hacer ejercicios del cuaderno para la próxima semana, pp. 40-43, ejercicios 3-12 - 3-16
miércoles	13 mar.	Lección 3, Módulo 4 (pp. 71-75) - Las enfermedades de la niñez - Verbos irregulares en el presente <b>PRUEBA 3 (VOCABULARIO – Lección 3)</b> <b>LECTURA Y ACTIVIDADES</b>	Estudiar vocabulario para hoy, (pp. 75-76) Hacer ejercicios del cuaderno para la próxima semana, pp. 43-45, ejercicios 3-17 - 3-21
lunes	18 mar.	<b>Entregar COMPOSICIÓN 1</b> <b>REPASO LECCIÓN 3</b> <b>Lección 4, Módulo 1 (pp. 79-84)</b> - La diabetes - Los adjetivos posesivos	Estudiar vocabulario para hoy (pp. 98-99) Hacer ejercicios del cuaderno para la próxima semana, pp. 47-49, Ejercicios 4-1 - 4-6
miércoles	20 mar.	<b>Lección 4, Módulo 2 (pp. 84-88)</b> - Problemas del corazón - Los verbos con cambios de raíz	Estudiar vocabulario para hoy (pp. 98-99) Hacer ejercicios del cuaderno para la próxima semana, pp. 49-52 Ejercicios 4-7 - 4-12

lunes	25 mar.	Lección 4, Módulo 3 (pp. 89-93) - El cáncer Los comparativos	Estudiar vocabulario para hoy (pp. 98-99) Hacer ejercicios del cuaderno para la próxima semana, pp. 53-56, ejercicios 4-13 - 4-18
miércoles	27 mar.	Lección 4, Módulo 4 (pp. 93-97) - El SIDA - Los superlativos	Estudiar vocabulario para hoy (pp. 98-99) Hacer ejercicios del cuaderno para la próxima semana, pp. 56-59, Ejercicios 4-19 - 4-22
lunes	1 apr.	PRUEBA 4 (GRAMÁTICA- lección 4) REPASO para el examen 2 Actividades comunicativas LECTURA Y ACTIVIDADES	
miércoles	3 apr.	EXAMEN 2 - LECCIONES 3 Y 4 Introducción: Lección 5 Actividades comunicativas	
lunes	8 apr.	Lección 5, Módulo 1 (pp. 102-105) - Una llamada al 911 - Introducción a los mandatos formales	Estudiar vocabulario para hoy (pp. 120-121) Hacer ejercicios del cuaderno para la próxima semana, pp. 61-64, Ejercicios 5-1 - 5-7
miércoles	10 apr.	Lección 5, Módulo 2 (pp. 106-111) - En la ambulancia - Los mandatos irregulares con pronombres de objeto indirecto Práctica de mandatos directos e indirectos - práctica comunicativa	Estudiar vocabulario para hoy (pp. 120-121) Hacer ejercicios de cuaderno para la próxima semana, pp. 64-67, Ejercicios 5-8 - 5-12
lunes	15 apr.	Lección 5, Módulo 3 (pp. 111-116) - En la sala de urgencia - Las expresiones afirmativas y negativas PRESENTACIONES	Estudiar vocabulario para hoy (pp. 120-121) Hacer ejercicios del cuaderno para la próxima semana, pp. 69-71, ejercicios 5-14 - 5-19
lunes	17 apr.	Lección 5, Módulo 4 (pp. 116-120) - Algunos efectos secundarios - Más sobre las expresiones negativas Estudiar vocabulario para hoy (pp. 120-121) PRESENTACIONES LECTURA Y ACTIVIDADES Entregar COMPOSICIÓN 2	Hacer ejercicios del cuaderno para la próxima semana, pp. 72-75, ejercicios 5-20 - 5-25
miércoles	20 apr.	PRUEBA 5 (Vocabulario - lección 5) REPASO: lección 5	



lunes	24 apr.	Práctica para el EXAMEN 3 Actividades comunicativas LECTURA Y ACTIVIDADES	
miércoles	29 apr.	Práctica para el examen oral Actividades comunicativas EXAMEN ORAL	
lunes	1 mayo	EXAMEN 3 - LECCIÓN 5 Práctica para el examen oral Actividades comunicativas EXAMEN ORAL	